

# The Demand for Remote Sensing Products in Greenland

Kirsty Langley

Eva Mätzler



# The Demand for Remote Sensing Products in Greenland

## Development and management beyond the technical map...

- Infrastructure development and management from local to regional scales
- Resource development
- Policy making

## Understanding environmental systems

- Environmental change detection
- Ecosystems

## Development and management beyond the technical map...

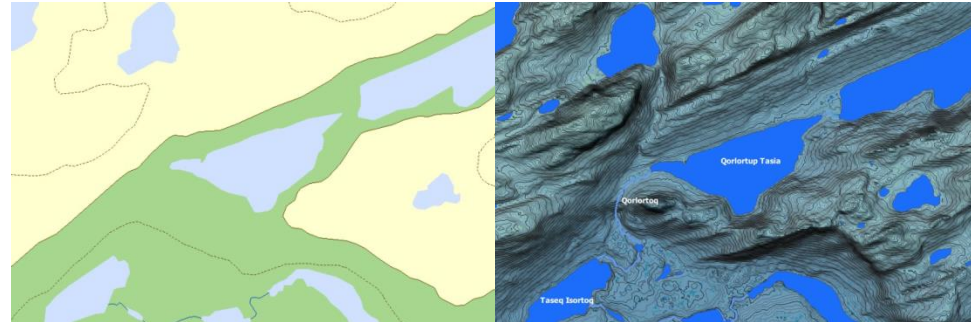


Basis for planning needs to be realistic

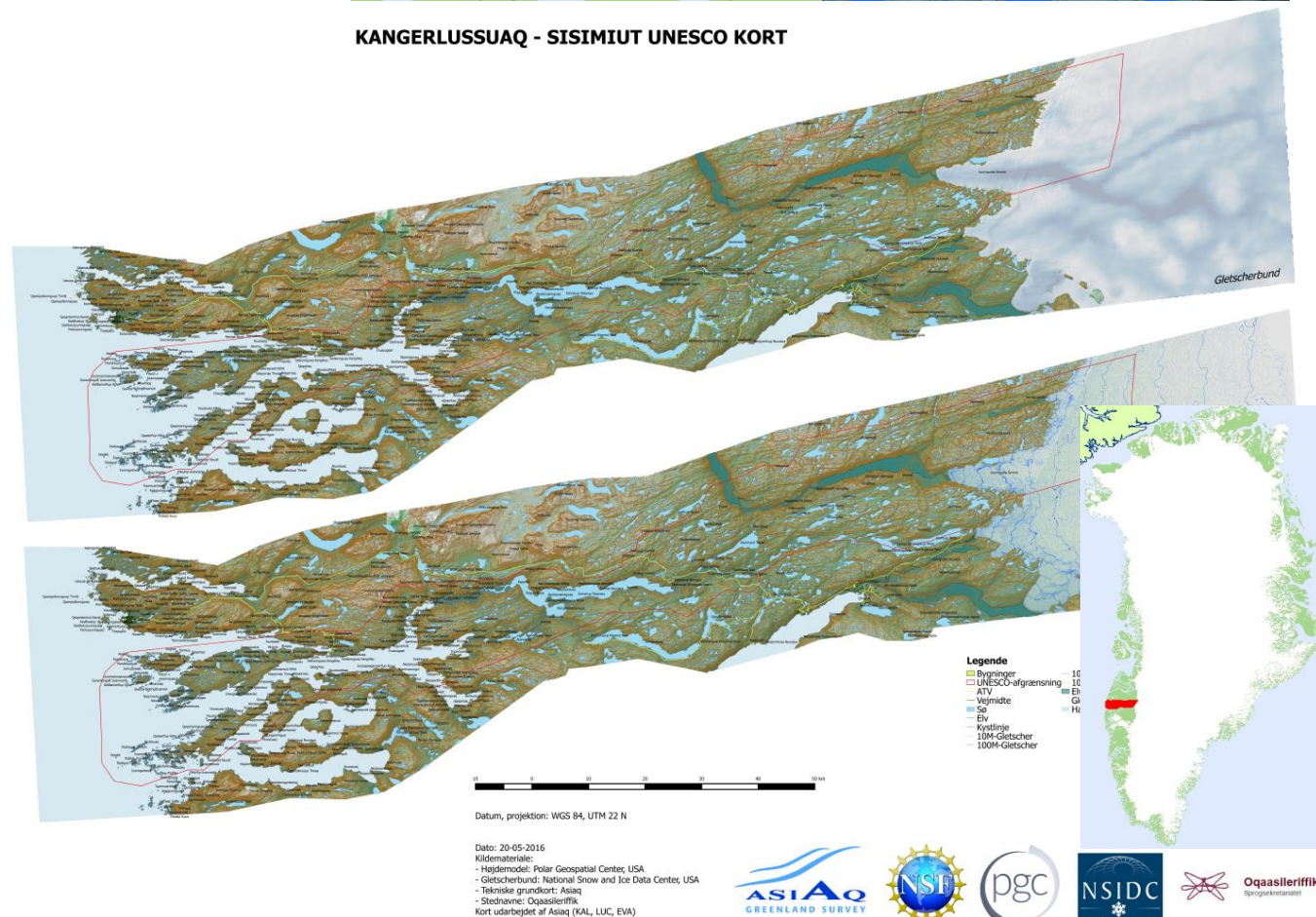
# Development and management beyond the technical map...

Has provided the basis for :

- UNESCO application
- Communication
- Transportation
- Housing development



**KANGERLUSSUAQ - SISIMIUT UNESCO KORT**





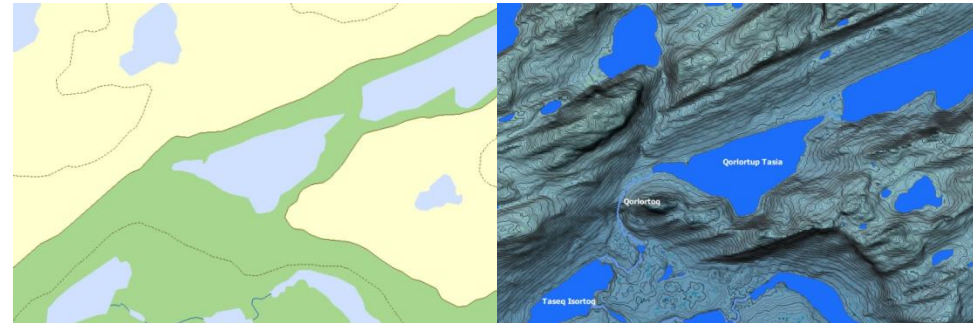
# Development and management beyond the technical map...

Has provided the basis for :

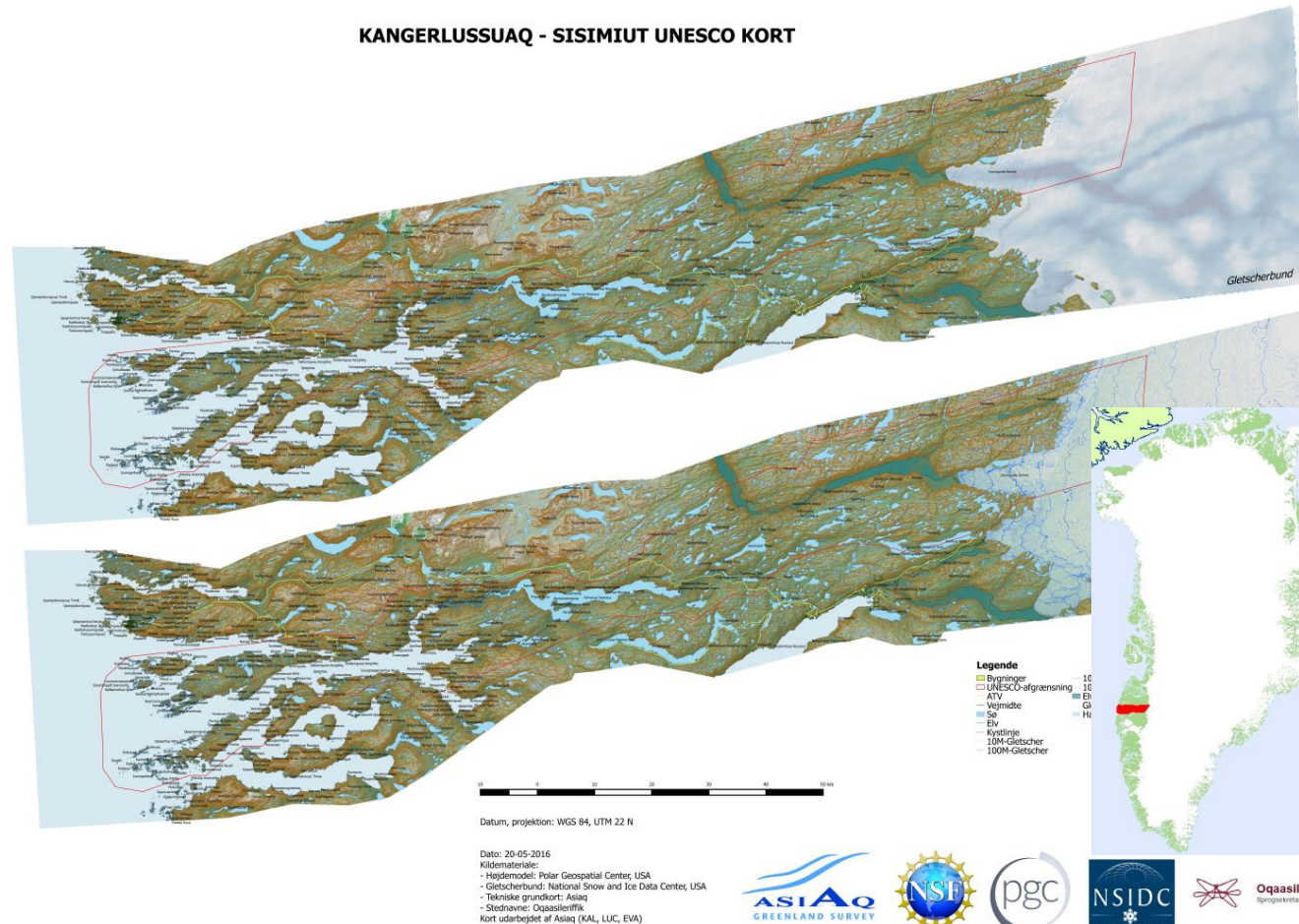
- UNESCO application
- Communication
- Transportation
- Housing development

Other key areas impacted by the availability of this key data are:

- Airports - flight paths
- View shed analysis
- Land classification
- Land use allocation
- Drinking water drainage basin delineation
- Renewable energy: hydro-potential
- Waste management
- Recreation / Tourism



KANGERLUSSUAQ - SISIMIUT UNESCO KORT



## Development and management beyond the technical map...

Has provided the basis for :

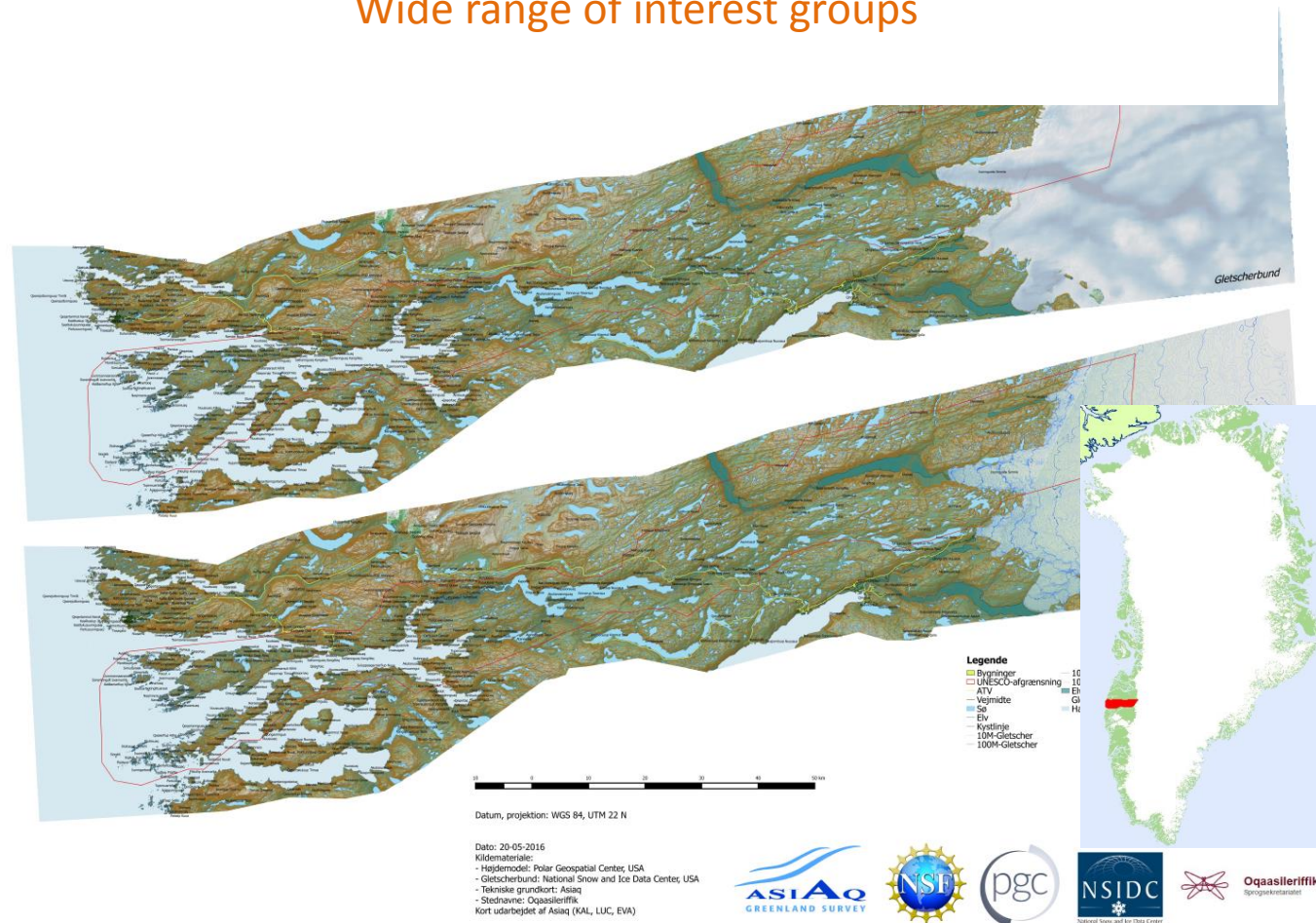
- UNESCO application
- Communication
- Transportation
- Housing development

Other key areas impacted by the availability of this key data are:

- Airports - flight paths
- View shed analysis
- Land classification
- Land use allocation
- Drinking water drainage basin delineation
- Renewable energy: hydro-potential
- Waste management
- Recreation / Tourism

Next step is development of thematic maps (ie. geology maps, archeological sites, water catchments, ect.)

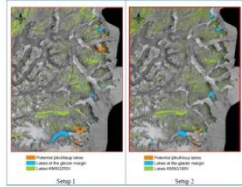
Wide range of interest groups



## Understanding environmental systems

Internally initiated, but prompted by demand/relevance/potential

# Understanding environmental systems

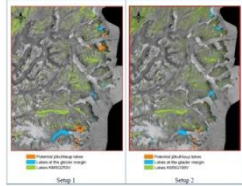


## Glacier lake outburst floods

infrastructure, hazard assessment, ecosystems and environment, cryosphere



# Understanding environmental systems



## Glacier lake outburst floods

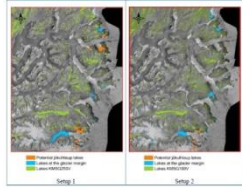
infrastructure, hazard assessment, ecosystems and environment, cryosphere



## Detection and counting of mammals

conservation and resource management

# Understanding environmental systems



## Glacier lake outburst floods

infrastructure, hazard assessment, ecosystems and environment, cryosphere



## Detection and counting of mammals

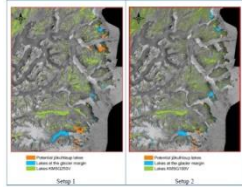
conservation and resource management



## Permafrost degradation

infrastructure, hazard assessment, ecosystems and environment, cryosphere

# Understanding environmental systems



## Glacier lake outburst floods

infrastructure, hazard assessment, ecosystems and environment, cryosphere



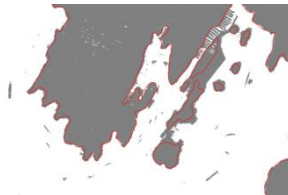
## Detection and counting of mammals

conservation and resource management



## Permafrost degradation

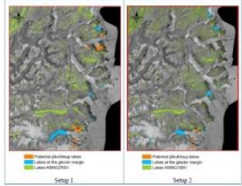
infrastructure, hazard assessment, ecosystems and environment, cryosphere



## Coastline

infrastructure, hazard assessment, ecosystems and environment

# Understanding environmental systems



## Glacier lake outburst floods

infrastructure, hazard assessment, ecosystems and environment, cryosphere



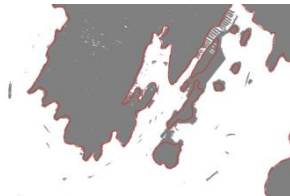
## Detection and counting of mammals

conservation and resource management



## Permafrost degradation

infrastructure, hazard assessment, ecosystems and environment, cryosphere



## Coastline

infrastructure, hazard assessment, ecosystems and environment



## Spring slush flow events

frequency, magnitude and impact?

Thanks for your attention  
comments and questions welcome

